



Keeping You Connected.



SEMI PREMIUM CONNECTIONS  
FIELD TESTED. FIELD PROVEN.

## Precision Connections BK-HT

### 5.5 in. 23 lb/ft CYP-110 with 6.3 in. Coupling OD

#### Pipe Body

Nominal OD	5.500	inches
Nominal Weight	23.00	lb/ft
Wall Thickness	0.415	inches
Plain End Weight	22.54	lb/ft
Drift	4.545	inches
Nominal ID	4.670	inches
Grade	CYP-110	
Min Yield	110,000	lbf/in <sup>2</sup>
Min Tensile	125,000	lbf/in <sup>2</sup>
Critical Section Area	6.630	in <sup>2</sup>
Pipe Body Yield Strength	729	kips
Min Internal Yield Pressure	14,530	psi
Collapse Pressure	14,540	psi

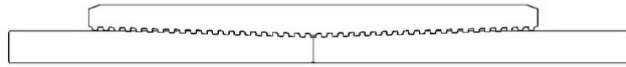
#### Connection

Coupling OD	6.300	inches
Coupling Length	8.250	inches
Make Up Loss	4.125	inches
Critical Section Area	8.456	in <sup>2</sup>
Internal Pressure Rating	100%	
External Pressure Rating	100%	
Tension Efficiency	100%	
Connection Strength	729	kips
Compression Efficiency	100%	
Uniaxial Bend Rating	80.0	° / 100 ft
Min Make Up Torque	10,000	ft-lbs
Yield Torque	39,000	ft-lbs

v1.2

7/26/2018

This documentation contains confidential and proprietary information not to be reproduced or divulged in whole or in part to anyone outside of your company without prior written authorization from Precision Connections, LLC, and such documentation and information is provided to you upon such conditions of confidentiality.



**Torque Data Sheet - Precision Connections BK-HT**

**5.5 in. 23 lb/ft CYP-110 with 6.3 in. Coupling OD**

Min Make Up Torque	10,000	ft-lbs	Max Operating Torque	33,150	ft-lbs
Max Make Up Torque	29,250	ft-lbs	Yield Torque	39,000	ft-lbs
Optimum Torque	14,050	ft-lbs			

**Representative Torque Turn Graph**

