



Keeping You Connected.



SEMI PREMIUM CONNECTIONS
FIELD TESTED. FIELD PROVEN.

Precision Connections BK-HT

5.5 in. 23 lb/ft L-80 with 6.3 in. Coupling OD

Pipe Body

Nominal OD	5.500	inches
Nominal Weight	23.00	lb/ft
Wall Thickness	0.415	inches
Plain End Weight	22.54	lb/ft
Drift	4.545	inches
Nominal ID	4.670	inches
Grade	L-80	
Min Yield	80,000	lbf/in ²
Min Tensile	95,000	lbf/in ²
Critical Section Area	6.630	in ²
Pipe Body Yield Strength	530	kips
Min Internal Yield Pressure	10,560	psi
Collapse Pressure	11,160	psi

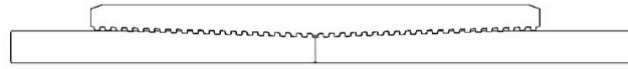
Connection

Coupling OD	6.300	inches
Coupling Length	8.250	inches
Make Up Loss	4.125	inches
Critical Section Area	8.456	in ²
Internal Pressure Rating	100%	
External Pressure Rating	100%	
Tension Efficiency	100%	
Connection Strength	530	kips
Compression Efficiency	100%	
Uniaxial Bend Rating	58.2	° / 100 ft
Min Make Up Torque	7,350	ft-lbs
Yield Torque	28,350	ft-lbs

v1.2

7/26/2018

This documentation contains confidential and proprietary information not to be reproduced or divulged in whole or in part to anyone outside of your company without prior written authorization from Precision Connections, LLC, and such documentation and information is provided to you upon such conditions of confidentiality.



Torque Data Sheet - Precision Connections BK-HT

5.5 in. 23 lb/ft L-80 with 6.3 in. Coupling OD

Min Make Up Torque	7,350	ft-lbs	Max Operating Torque	24,100	ft-lbs
Max Make Up Torque	21,250	ft-lbs	Yield Torque	28,350	ft-lbs
Optimum Torque	10,200	ft-lbs			

Representative Torque Turn Graph

