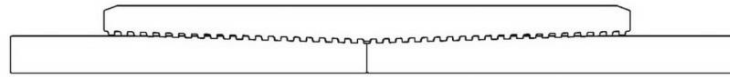




Keeping You Connected.



SEMI PREMIUM CONNECTIONS  
FIELD TESTED. FIELD PROVEN.

## Precision Connections BK-HT

### 5.5 in. 26 lb/ft L-80 with 6.3 in. Coupling OD

#### Pipe Body

Nominal OD	5.500	inches
Nominal Weight	26.00	lb/ft
Wall Thickness	0.476	inches
Plain End Weight	25.55	lb/ft
Drift	4.545	inches
Nominal ID	4.548	inches
Grade	L-80	
Min Yield	80,000	lbf/in <sup>2</sup>
Min Tensile	95,000	lbf/in <sup>2</sup>
Critical Section Area	7.513	in <sup>2</sup>
Pipe Body Yield Strength	601	kips
Min Internal Yield Pressure	12,120	psi
Collapse Pressure	12,650	psi

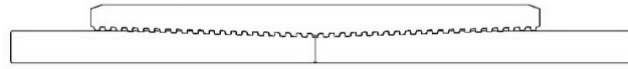
#### Connection

Coupling OD	6.300	inches
Coupling Length	8.250	inches
Make Up Loss	4.125	inches
Critical Section Area	8.456	in <sup>2</sup>
Internal Pressure Rating	100%	
External Pressure Rating	100%	
Tension Efficiency	100%	
Connection Strength	601	kips
Compression Efficiency	100%	
Uniaxial Bend Rating	58.2	° / 100 ft
Min Make Up Torque	7,950	ft-lbs
Yield Torque	30,550	ft-lbs

v1.2

7/26/2018

This documentation contains confidential and proprietary information not to be reproduced or divulged in whole or in part to anyone outside of your company without prior written authorization from Precision Connections, LLC, and such documentation and information is provided to you upon such conditions of confidentiality.



**Torque Data Sheet - Precision Connections BK-HT**

**5.5 in. 26 lb/ft L-80 with 6.3 in. Coupling OD**

Min Make Up Torque	7,950	ft-lbs	Max Operating Torque	25,950	ft-lbs
Max Make Up Torque	22,900	ft-lbs	Yield Torque	30,550	ft-lbs
Optimum Torque	11,000	ft-lbs			

**Representative Torque Turn Graph**

