



Keeping You Connected.



SEMI PREMIUM CONNECTIONS  
FIELD TESTED. FIELD PROVEN.

## Precision Connections BK-HT

### 7.625 in. 39 lb/ft L-80 with 8.5 in. Coupling OD

#### Pipe Body

Nominal OD	7.625	inches
Nominal Weight	39.00	lb/ft
Wall Thickness	0.5	inches
Plain End Weight	38.05	lb/ft
Drift	6.500	inches
Nominal ID	6.625	inches
Grade	L-80	
Min Yield	80,000	lbf/in <sup>2</sup>
Min Tensile	95,000	lbf/in <sup>2</sup>
Critical Section Area	11.192	in <sup>2</sup>
Pipe Body Yield Strength	895	kips
Min Internal Yield Pressure	9,180	psi
Collapse Pressure	8,820	psi

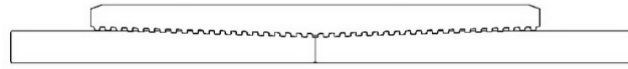
#### Connection

Coupling OD	8.500	inches
Coupling Length	9.375	inches
Make Up Loss	4.688	inches
Critical Section Area	13.063	in <sup>2</sup>
Internal Pressure Rating	100%	
External Pressure Rating	100%	
Tension Efficiency	100%	
Connection Strength	895	kips
Compression Efficiency	100%	
Uniaxial Bend Rating	43.1	° / 100 ft
Min Make Up Torque	10,000	ft-lbs
Yield Torque	48,350	ft-lbs

v1.2

7/26/2018

This documentation contains confidential and proprietary information not to be reproduced or divulged in whole or in part to anyone outside of your company without prior written authorization from Precision Connections, LLC, and such documentation and information is provided to you upon such conditions of confidentiality.



**Torque Data Sheet - Precision Connections BK-HT**

**7.625 in. 39 lb/ft L-80 with 8.5 in. Coupling OD**

Min Make Up Torque	10,000	ft-lbs	Max Operating Torque	41,100	ft-lbs
Max Make Up Torque	36,250	ft-lbs	Yield Torque	48,350	ft-lbs
Optimum Torque	17,400	ft-lbs			

**Representative Torque Turn Graph**

