



Keeping You Connected.



SEMI PREMIUM CONNECTIONS  
FIELD TESTED. FIELD PROVEN.

## Precision Connections BK

### 4.5 in. 13.5 lb/ft HC-L80 with 5 in. Coupling OD

#### Pipe Body

Nominal OD	4.500	inches
Nominal Weight	13.50	lb/ft
Wall Thickness	0.29	inches
Plain End Weight	13.04	lb/ft
Drift	3.795	inches
Nominal ID	3.920	inches
<hr/>		
Grade	HC-L80	
Min Yield	80,000	lbf/in <sup>2</sup>
Min Tensile	95,000	lbf/in <sup>2</sup>
Critical Section Area	3.836	in <sup>2</sup>
Pipe Body Yield Strength	307	kips
Min Internal Yield Pressure	9,020	psi
Collapse Pressure	9,240	psi

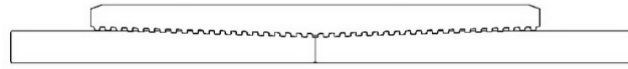
#### Connection

Coupling OD	5.000	inches
Coupling Length	7.875	inches
Make Up Loss	3.938	inches
Critical Section Area	4.472	in <sup>2</sup>
Internal Pressure Rating	100%	
External Pressure Rating	100%	
Tension Efficiency	100%	
Connection Strength	307	kips
Compression Efficiency	100%	
Uniaxial Bend Rating	73.3	° / 100 ft
Min Make Up Torque	2,050	ft-lbs
Yield Torque	7,800	ft-lbs

v1.2

7/26/2018

This documentation contains confidential and proprietary information not to be reproduced or divulged in whole or in part to anyone outside of your company without prior written authorization from Precision Connections, LLC, and such documentation and information is provided to you upon such conditions of confidentiality.



**Torque Data Sheet - Precision Connections BK**

**4.5 in. 13.5 lb/ft HC-L80 with 5 in. Coupling OD**

Min Make Up Torque	2,050	ft-lbs	Max Operating Torque	6,650	ft-lbs
Max Make Up Torque	5,850	ft-lbs	Yield Torque	7,800	ft-lbs
Optimum Torque	2,800	ft-lbs			

**Representative Torque Turn Graph**

