



Keeping You Connected.



SEMI PREMIUM CONNECTIONS  
FIELD TESTED. FIELD PROVEN.

## Precision Connections BK

### 8.625 in. 40 lb/ft L-80 with 9.625 in. Coupling OD

#### Pipe Body

Nominal OD	8.625	inches
Nominal Weight	40.00	lb/ft
Wall Thickness	0.45	inches
Plain End Weight	39.29	lb/ft
Drift	7.625	inches
Nominal ID	7.725	inches
Grade	L-80	
Min Yield	80,000	lbf/in <sup>2</sup>
Min Tensile	95,000	lbf/in <sup>2</sup>
Critical Section Area	11.557	in <sup>2</sup>
Pipe Body Yield Strength	925	kips
Min Internal Yield Pressure	7,300	psi
Collapse Pressure	5,520	psi

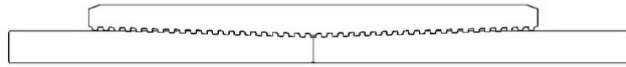
#### Connection

Coupling OD	9.625	inches
Coupling Length	9.625	inches
Make Up Loss	4.813	inches
Critical Section Area	16.640	in <sup>2</sup>
Internal Pressure Rating	100%	
External Pressure Rating	100%	
Tension Efficiency	100%	
Connection Strength	925	kips
Compression Efficiency	100%	
Uniaxial Bend Rating	38.1	° / 100 ft
Min Make Up Torque	10,000	ft-lbs
Yield Torque	53,100	ft-lbs

v1.2

7/26/2018

This documentation contains confidential and proprietary information not to be reproduced or divulged in whole or in part to anyone outside of your company without prior written authorization from Precision Connections, LLC, and such documentation and information is provided to you upon such conditions of confidentiality.



**Torque Data Sheet - Precision Connections BK**

**8.625 in. 40 lb/ft L-80 with 9.625 in. Coupling OD**

Min Make Up Torque	10,000	ft-lbs	Max Operating Torque	45,150	ft-lbs
Max Make Up Torque	39,800	ft-lbs	Yield Torque	53,100	ft-lbs
Optimum Torque	19,100	ft-lbs			

**Representative Torque Turn Graph**

