



Keeping You Connected.



SEMI  
**PREMIUMCONNECTIONS**  
FIELD TESTED. FIELD PROVEN.

## Precision Connections BK

9.625 in. 36 lb/ft Q-125 with 10.625 in. Coupling OD

### Pipe Body

Nominal OD	9.625	inches
Nominal Weight	36.00	lb/ft
Wall Thickness	0.352	inches
Plain End Weight	34.86	lb/ft
Drift	8.765	inches
Nominal ID	8.921	inches
Grade	Q-125	
Min Yield	125,000	lbf/in <sup>2</sup>
Min Tensile	135,000	lbf/in <sup>2</sup>
Critical Section Area	10.254	in <sup>2</sup>
Pipe Body Yield Strength	1282	kips
Min Internal Yield Pressure	8,000	psi
Collapse Pressure	2,480	psi

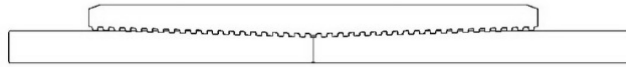
### Connection

Coupling OD	10.625	inches
Coupling Length	9.625	inches
Make Up Loss	4.813	inches
Critical Section Area	18.558	in <sup>2</sup>
Internal Pressure Rating	100%	
External Pressure Rating	100%	
Tension Efficiency	100%	
Connection Strength	1282	kips
Compression Efficiency	100%	
Uniaxial Bend Rating	53.9	° / 100 ft
Min Make Up Torque	10,000	ft-lbs
Yield Torque	69,300	ft-lbs

v1.2

7/26/2018

This documentation contains confidential and proprietary information not to be reproduced or divulged in whole or in part to anyone outside of your company without prior written authorization from Precision Connections, LLC, and such documentation and information is provided to you upon such conditions of confidentiality.



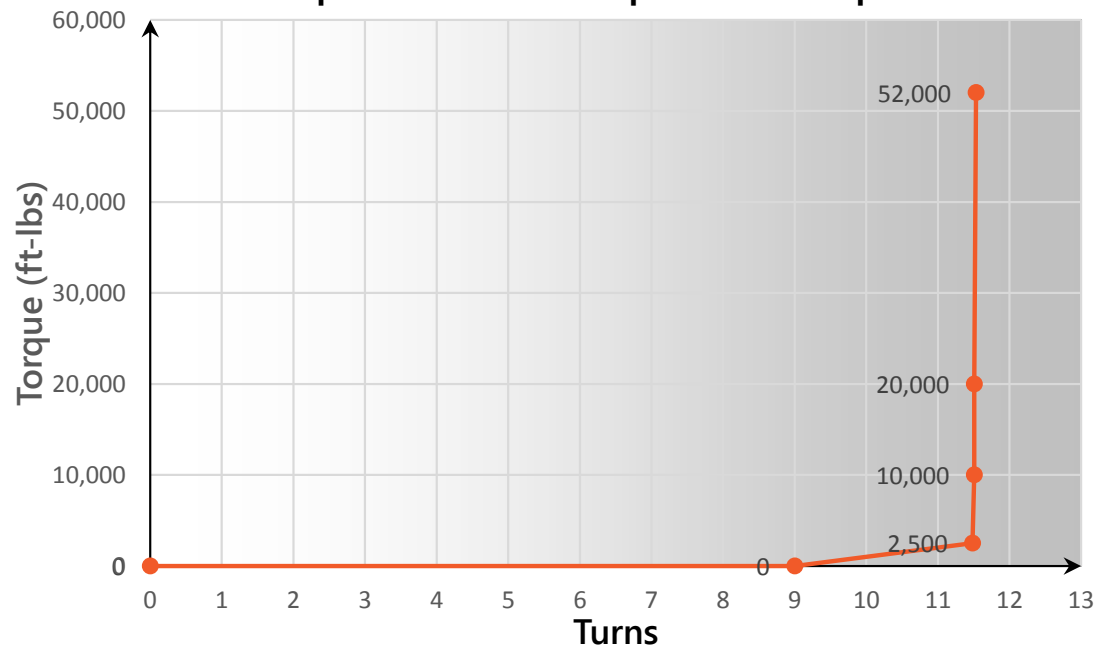
## Torque Data Sheet - Precision Connections BK

9.625 in. 36 lb/ft Q-125 with 10.625 in. Coupling OD

Min Make Up Torque	10,000	ft-lbs
Max Make Up Torque	52,000	ft-lbs
Optimum Torque	20,000	ft-lbs

Max Operating Torque	58,900	ft-lbs
Yield Torque	69,300	ft-lbs

**Representative Torque Turn Graph**



v1.2

7/26/2018