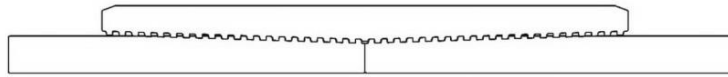




Keeping You Connected.

## Precision Connections BK

9.625 in. 47 lb/ft HC-L80 with 10.625 in. Coupling OD



SEMI  
**PREMIUMCONNECTIONS**  
FIELD TESTED. FIELD PROVEN.

### Pipe Body

Nominal OD	9.625	inches
Nominal Weight	47.00	lb/ft
Wall Thickness	0.472	inches
Plain End Weight	46.14	lb/ft
Drift	8.525	inches
Nominal ID	8.681	inches
Grade	HC-L80	
Min Yield	80,000	lbf/in <sup>2</sup>
Min Tensile	95,000	lbf/in <sup>2</sup>
Critical Section Area	13.572	in <sup>2</sup>
Pipe Body Yield Strength	1086	kips
Min Internal Yield Pressure	6,870	psi
Collapse Pressure	5,740	psi

### Connection

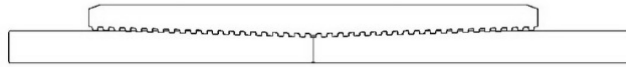
Coupling OD	10.625	inches
Coupling Length	9.625	inches
Make Up Loss	4.813	inches
Critical Section Area	18.558	in <sup>2</sup>
Internal Pressure Rating	100%	
External Pressure Rating	100%	
Tension Efficiency	100%	
Connection Strength	1086	kips
Compression Efficiency	100%	
Uniaxial Bend Rating	34.5	° / 100 ft
Min Make Up Torque	10,000	ft-lbs
Yield Torque	71,350	ft-lbs



v1.2

7/26/2018

This documentation contains confidential and proprietary information not to be reproduced or divulged in whole or in part to anyone outside of your company without prior written authorization from Precision Connections, LLC, and such documentation and information is provided to you upon such conditions of confidentiality.



## Torque Data Sheet - Precision Connections BK

9.625 in. 47 lb/ft HC-L80 with 10.625 in. Coupling OD

Min Make Up Torque 10,000 ft-lbs

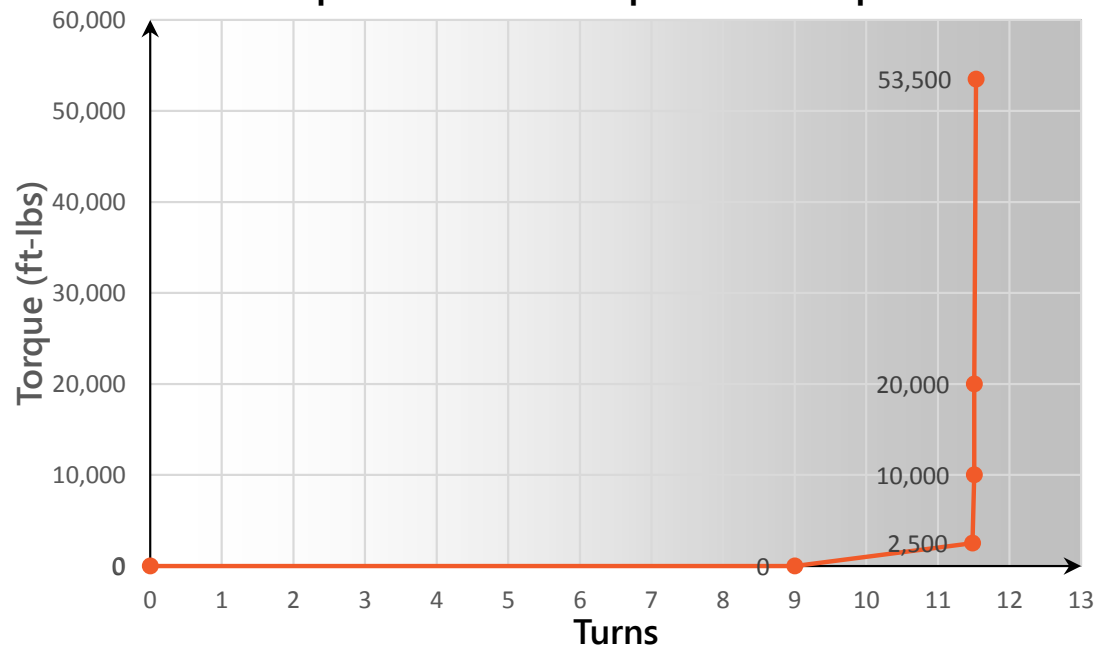
Max Make Up Torque 53,500 ft-lbs

Optimum Torque 20,000 ft-lbs

Max Operating Torque 60,650 ft-lbs

Yield Torque 71,350 ft-lbs

### Representative Torque Turn Graph



v1.2

7/26/2018