



Keeping You Connected.



SEMI
PREMIUMCONNECTIONS
FIELD TESTED. FIELD PROVEN.

Precision Connections BK

9.625 in. 47 lb/ft P110 EC with 10.625 in. Coupling OD

Pipe Body

| | | |
|-----------------------------|---------|---------------------|
| Nominal OD | 9.625 | inches |
| Nominal Weight | 47.00 | lb/ft |
| Wall Thickness | 0.472 | inches |
| Plain End Weight | 46.14 | lb/ft |
| Drift | 8.525 | inches |
| Nominal ID | 8.681 | inches |
| Grade | P110 EC | |
| Min Yield | 125,000 | lbf/in ² |
| Min Tensile | 135,000 | lbf/in ² |
| Critical Section Area | 13.572 | in ² |
| Pipe Body Yield Strength | 1697 | kips |
| Min Internal Yield Pressure | 10,730 | psi |
| Collapse Pressure | 7,310 | psi |

Connection

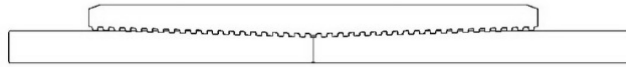
| | | |
|--------------------------|---------|-----------------|
| Coupling OD | 10.625 | inches |
| Coupling Length | 9.625 | inches |
| Make Up Loss | 4.813 | inches |
| Critical Section Area | 18.558 | in ² |
| Internal Pressure Rating | 100% | |
| External Pressure Rating | 100% | |
| Tension Efficiency | 100% | |
| Connection Strength | 1697 | kips |
| Compression Efficiency | 100% | |
| Uniaxial Bend Rating | 53.9 | ° / 100 ft |
| Min Make Up Torque | 10,000 | ft-lbs |
| Yield Torque | 111,500 | ft-lbs |



v1.2

7/26/2018

This documentation contains confidential and proprietary information not to be reproduced or divulged in whole or in part to anyone outside of your company without prior written authorization from Precision Connections, LLC, and such documentation and information is provided to you upon such conditions of confidentiality.



Torque Data Sheet - Precision Connections BK

9.625 in. 47 lb/ft P110 EC with 10.625 in. Coupling OD

Min Make Up Torque 10,000 ft-lbs

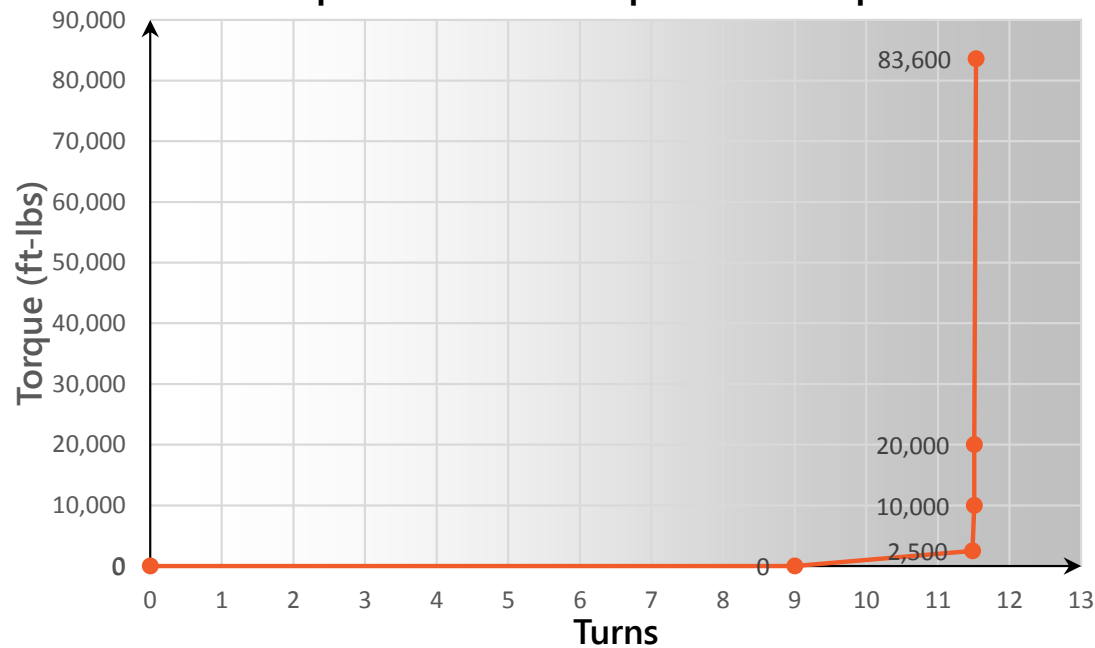
Max Make Up Torque 83,600 ft-lbs

Optimum Torque 20,000 ft-lbs

Max Operating Torque 94,750 ft-lbs

Yield Torque 111,500 ft-lbs

Representative Torque Turn Graph



v1.2

7/26/2018