



Keeping You Connected.



SEMI  
**PREMIUMCONNECTIONS**  
FIELD TESTED. FIELD PROVEN.

## Precision Connections BK

9.625 in. 53.5 lb/ft Q-125 with 10.625 in. Coupling OD

### Pipe Body

Nominal OD	9.625	inches
Nominal Weight	53.50	lb/ft
Wall Thickness	0.545	inches
Plain End Weight	52.85	lb/ft
Drift	8.500	inches
Nominal ID	8.535	inches
Grade	Q-125	
Min Yield	125,000	lbf/in <sup>2</sup>
Min Tensile	135,000	lbf/in <sup>2</sup>
Critical Section Area	15.546	in <sup>2</sup>
Pipe Body Yield Strength	1943	kips
Min Internal Yield Pressure	12,390	psi
Collapse Pressure	8,440	psi

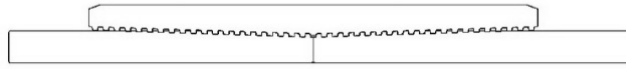
### Connection

Coupling OD	10.625	inches
Coupling Length	9.625	inches
Make Up Loss	4.813	inches
Critical Section Area	18.558	in <sup>2</sup>
Internal Pressure Rating	100%	
External Pressure Rating	100%	
Tension Efficiency	100%	
Connection Strength	1943	kips
Compression Efficiency	100%	
Uniaxial Bend Rating	53.9	° / 100 ft
Min Make Up Torque	10,000	ft-lbs
Yield Torque	137,500	ft-lbs

v1.2

7/26/2018

This documentation contains confidential and proprietary information not to be reproduced or divulged in whole or in part to anyone outside of your company without prior written authorization from Precision Connections, LLC, and such documentation and information is provided to you upon such conditions of confidentiality.



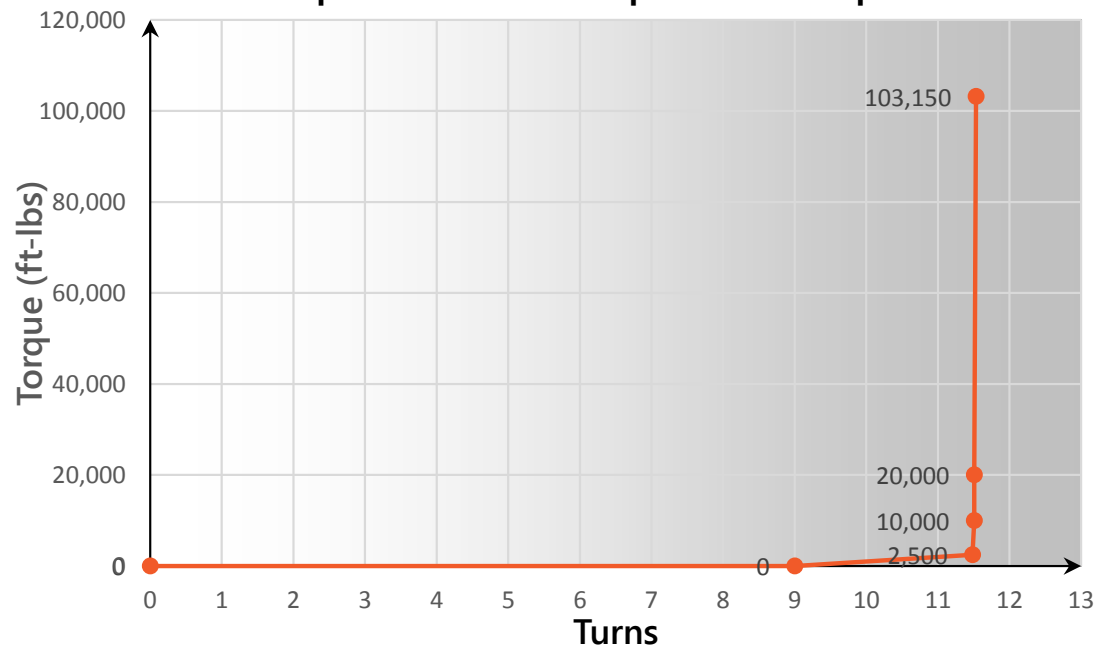
## Torque Data Sheet - Precision Connections BK

9.625 in. 53.5 lb/ft Q-125 with 10.625 in. Coupling OD

Min Make Up Torque	10,000	ft-lbs
Max Make Up Torque	103,150	ft-lbs
Optimum Torque	20,000	ft-lbs

Max Operating Torque	116,900	ft-lbs
Yield Torque	137,500	ft-lbs

**Representative Torque Turn Graph**



v1.2

7/26/2018