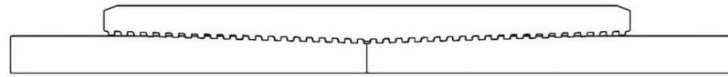




Keeping You Connected.



SEMI
PREMIUMCONNECTIONS
FIELD TESTED. FIELD PROVEN.

Precision Connections BK-HT

5.5 in. 17 lb/ft HC-L80 with 6.3 in. Coupling OD

Pipe Body

Nominal OD	5.500	inches
Nominal Weight	17.00	lb/ft
Wall Thickness	0.304	inches
Plain End Weight	16.87	lb/ft
Drift	4.767	inches
Nominal ID	4.892	inches
Grade	HC-L80	
Min Yield	80,000	lbf/in ²
Min Tensile	95,000	lbf/in ²
Critical Section Area	4.962	in ²
Pipe Body Yield Strength	397	kips
Min Internal Yield Pressure	7,740	psi
Collapse Pressure	7,200	psi

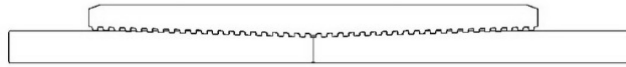
Connection

Coupling OD	6.300	inches
Coupling Length	8.250	inches
Make Up Loss	4.125	inches
Critical Section Area	8.456	in ²
Internal Pressure Rating	100%	
External Pressure Rating	100%	
Tension Efficiency	100%	
Connection Strength	397	kips
Compression Efficiency	100%	
Uniaxial Bend Rating	58.2	° / 100 ft
Min Make Up Torque	5,000	ft-lbs
Yield Torque	19,250	ft-lbs

v1.2

7/26/2018

This documentation contains confidential and proprietary information not to be reproduced or divulged in whole or in part to anyone outside of your company without prior written authorization from Precision Connections, LLC, and such documentation and information is provided to you upon such conditions of confidentiality.



Torque Data Sheet - Precision Connections BK-HT

5.5 in. 17 lb/ft HC-L80 with 6.3 in. Coupling OD

Min Make Up Torque 5,000 ft-lbs

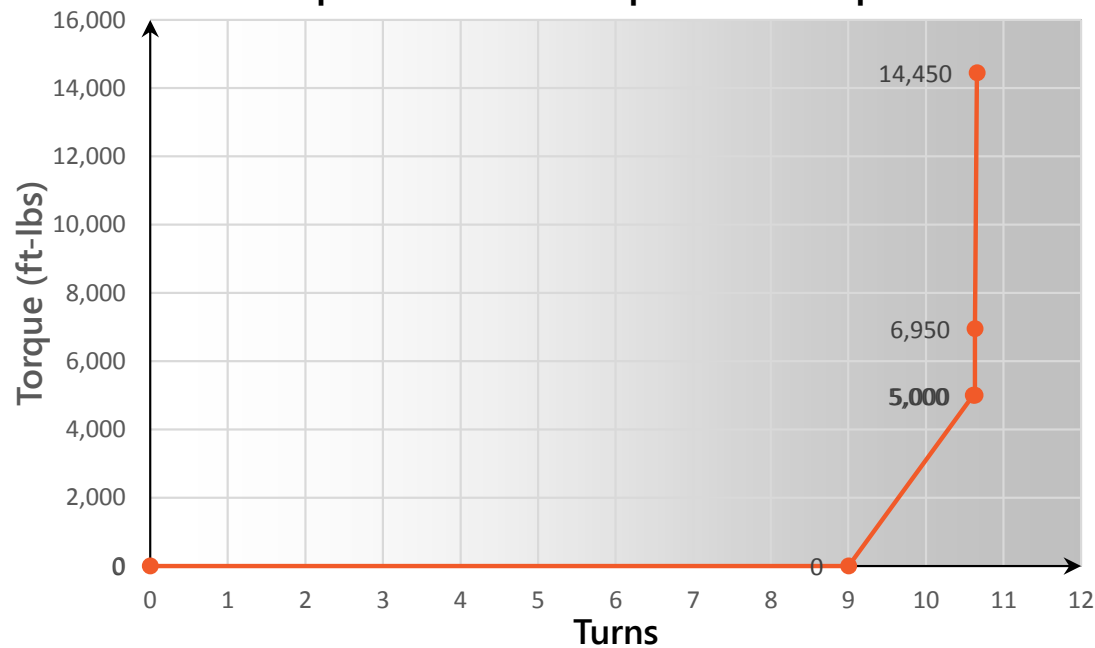
Max Make Up Torque 14,450 ft-lbs

Optimum Torque 6,950 ft-lbs

Max Operating Torque 16,400 ft-lbs

Yield Torque 19,250 ft-lbs

Representative Torque Turn Graph



v1.2

7/26/2018