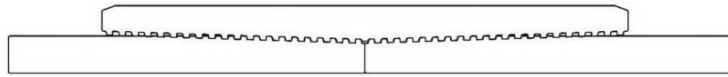




Keeping You Connected.



SEMI  
**PREMIUMCONNECTIONS**  
FIELD TESTED. FIELD PROVEN.

## Precision Connections BK-HT

5.5 in. 17 lb/ft Q-125 with 6.3 in. Coupling OD

### Pipe Body

Nominal OD	5.500	inches
Nominal Weight	17.00	lb/ft
Wall Thickness	0.304	inches
Plain End Weight	16.87	lb/ft
Drift	4.767	inches
Nominal ID	4.892	inches
Grade	Q-125	
Min Yield	125,000	lbf/in <sup>2</sup>
Min Tensile	135,000	lbf/in <sup>2</sup>
Critical Section Area	4.962	in <sup>2</sup>
Pipe Body Yield Strength	620	kips
Min Internal Yield Pressure	12,090	psi
Collapse Pressure	7,890	psi

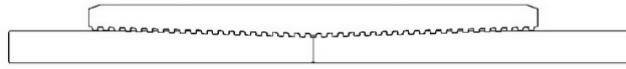
### Connection

Coupling OD	6.300	inches
Coupling Length	8.250	inches
Make Up Loss	4.125	inches
Critical Section Area	8.456	in <sup>2</sup>
Internal Pressure Rating	100%	
External Pressure Rating	100%	
Tension Efficiency	100%	
Connection Strength	620	kips
Compression Efficiency	100%	
Uniaxial Bend Rating	91.0	° / 100 ft
Min Make Up Torque	7,850	ft-lbs
Yield Torque	30,100	ft-lbs

v1.2

7/26/2018

This documentation contains confidential and proprietary information not to be reproduced or divulged in whole or in part to anyone outside of your company without prior written authorization from Precision Connections, LLC, and such documentation and information is provided to you upon such conditions of confidentiality.



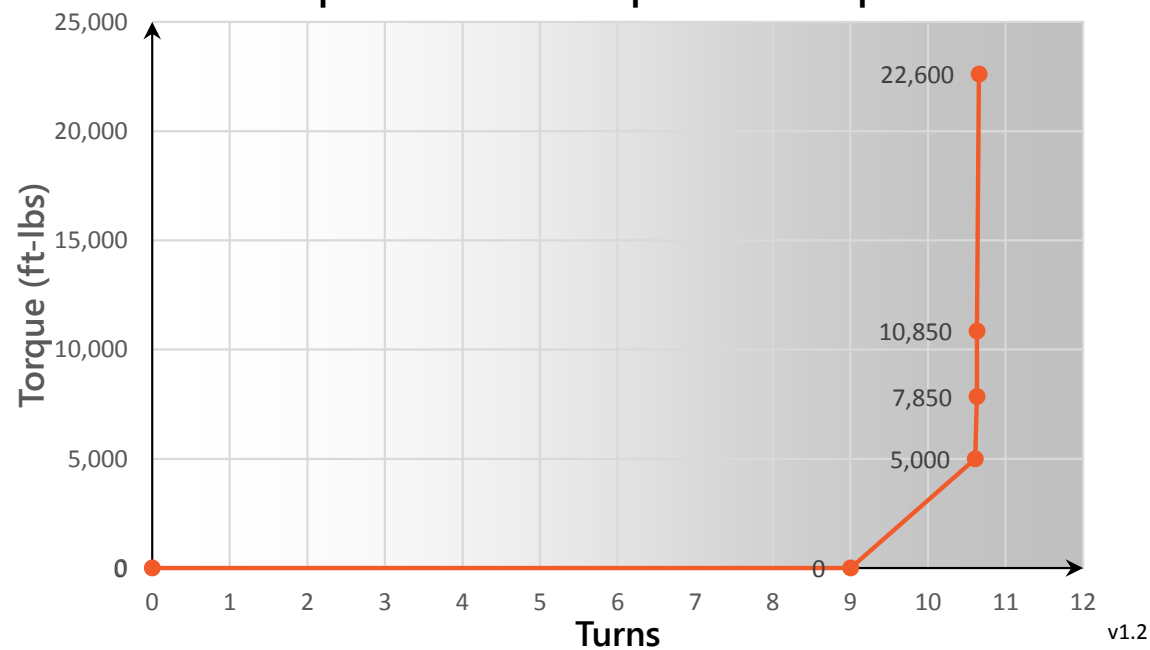
## Torque Data Sheet - Precision Connections BK-HT

5.5 in. 17 lb/ft Q-125 with 6.3 in. Coupling OD

Min Make Up Torque	7,850	ft-lbs
Max Make Up Torque	22,600	ft-lbs
Optimum Torque	10,850	ft-lbs

Max Operating Torque	25,600	ft-lbs
Yield Torque	30,100	ft-lbs

**Representative Torque Turn Graph**



v1.2

7/26/2018