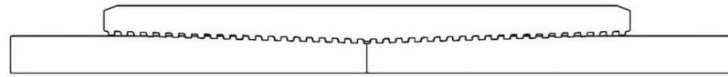




Keeping You Connected.



SEMI
PREMIUMCONNECTIONS
FIELD TESTED. FIELD PROVEN.

Precision Connections BK-HT

5.5 in. 23 lb/ft Q-125 with 6.3 in. Coupling OD

Pipe Body

Nominal OD	5.500	inches
Nominal Weight	23.00	lb/ft
Wall Thickness	0.415	inches
Plain End Weight	22.54	lb/ft
Drift	4.545	inches
Nominal ID	4.670	inches
Grade	Q-125	
Min Yield	125,000	lbf/in ²
Min Tensile	135,000	lbf/in ²
Critical Section Area	6.630	in ²
Pipe Body Yield Strength	829	kips
Min Internal Yield Pressure	16,510	psi
Collapse Pressure	16,060	psi

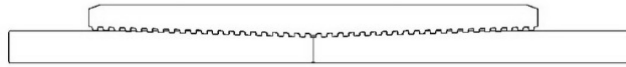
Connection

Coupling OD	6.300	inches
Coupling Length	8.250	inches
Make Up Loss	4.125	inches
Critical Section Area	8.456	in ²
Internal Pressure Rating	100%	
External Pressure Rating	100%	
Tension Efficiency	100%	
Connection Strength	829	kips
Compression Efficiency	100%	
Uniaxial Bend Rating	91.0	° / 100 ft
Min Make Up Torque	10,000	ft-lbs
Yield Torque	44,300	ft-lbs

v1.2

7/26/2018

This documentation contains confidential and proprietary information not to be reproduced or divulged in whole or in part to anyone outside of your company without prior written authorization from Precision Connections, LLC, and such documentation and information is provided to you upon such conditions of confidentiality.



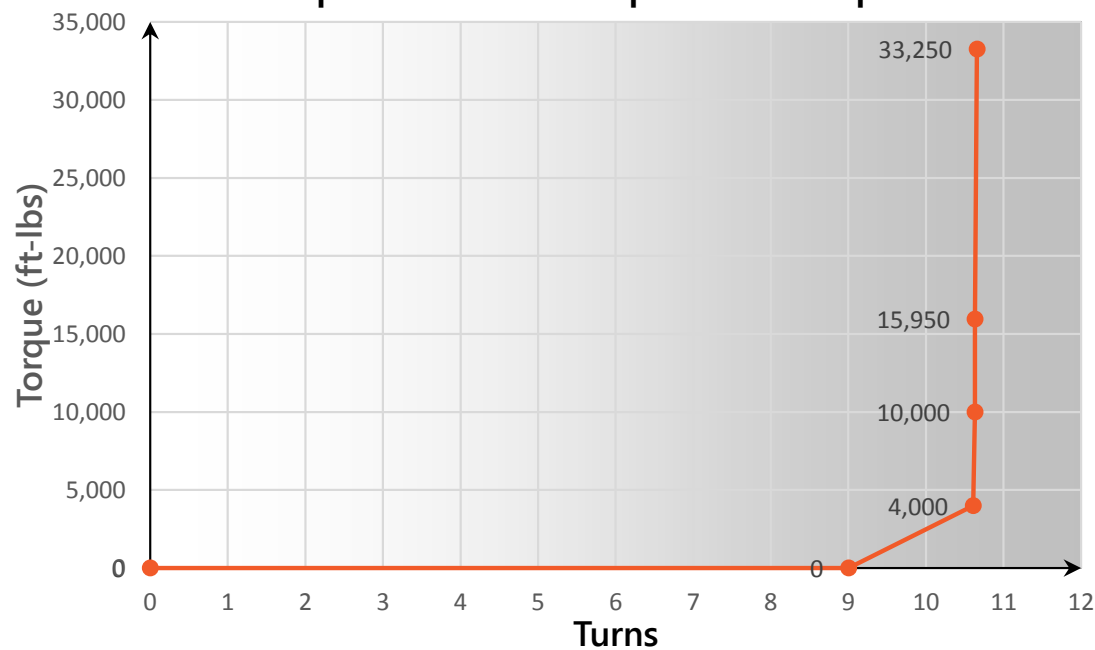
Torque Data Sheet - Precision Connections BK-HT

5.5 in. 23 lb/ft Q-125 with 6.3 in. Coupling OD

Min Make Up Torque	10,000	ft-lbs
Max Make Up Torque	33,250	ft-lbs
Optimum Torque	15,950	ft-lbs

Max Operating Torque	37,650	ft-lbs
Yield Torque	44,300	ft-lbs

Representative Torque Turn Graph



v1.2

7/26/2018