



Keeping You Connected.



SEMI PREMIUM CONNECTIONS  
FIELD TESTED. FIELD PROVEN.

## Precision Connections BK-HT

### 7 in. 26 lb/ft P110 EC with 7.875 in. Coupling OD

#### Pipe Body

Nominal OD	7.000	inches
Nominal Weight	26.00	lb/ft
Wall Thickness	0.362	inches
Plain End Weight	25.66	lb/ft
Drift	6.151	inches
Nominal ID	6.276	inches
Grade	P110 EC	
Min Yield	125,000	lbf/in <sup>2</sup>
Min Tensile	135,000	lbf/in <sup>2</sup>
Critical Section Area	7.549	in <sup>2</sup>
Pipe Body Yield Strength	944	kips
Min Internal Yield Pressure	11,310	psi
Collapse Pressure	8,030	psi

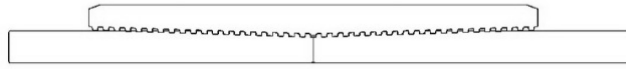
#### Connection

Coupling OD	7.875	inches
Coupling Length	9.000	inches
Make Up Loss	4.500	inches
Critical Section Area	11.859	in <sup>2</sup>
Internal Pressure Rating	100%	
External Pressure Rating	100%	
Tension Efficiency	100%	
Connection Strength	944	kips
Compression Efficiency	100%	
Uniaxial Bend Rating	72.8	° / 100 ft
Min Make Up Torque	10,000	ft-lbs
Yield Torque	40,350	ft-lbs

v1.2

7/26/2018

This documentation contains confidential and proprietary information not to be reproduced or divulged in whole or in part to anyone outside of your company without prior written authorization from Precision Connections, LLC, and such documentation and information is provided to you upon such conditions of confidentiality.



**Torque Data Sheet - Precision Connections BK-HT**

**7 in. 26 lb/ft P110 EC with 7.875 in. Coupling OD**

Min Make Up Torque	10,000	ft-lbs	Max Operating Torque	34,300	ft-lbs
Max Make Up Torque	30,250	ft-lbs	Yield Torque	40,350	ft-lbs
Optimum Torque	14,500	ft-lbs			

**Representative Torque Turn Graph**

