



Keeping You Connected.



SEMI PREMIUM CONNECTIONS  
FIELD TESTED. FIELD PROVEN.

## Precision Connections BK-HT

### 7.625 in. 33.7 lb/ft P-110 with 8.5 in. Coupling OD

#### Pipe Body

Nominal OD	7.625	inches
Nominal Weight	33.70	lb/ft
Wall Thickness	0.43	inches
Plain End Weight	33.04	lb/ft
Drift	6.640	inches
Nominal ID	6.765	inches
Grade	P-110	
Min Yield	110,000	lbf/in <sup>2</sup>
Min Tensile	125,000	lbf/in <sup>2</sup>
Critical Section Area	9.720	in <sup>2</sup>
Pipe Body Yield Strength	1069	kips
Min Internal Yield Pressure	10,860	psi
Collapse Pressure	7,870	psi

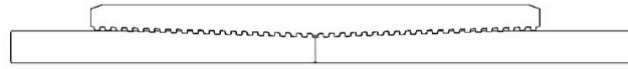
#### Connection

Coupling OD	8.500	inches
Coupling Length	9.375	inches
Make Up Loss	4.688	inches
Critical Section Area	13.063	in <sup>2</sup>
Internal Pressure Rating	100%	
External Pressure Rating	100%	
Tension Efficiency	100%	
Connection Strength	1069	kips
Compression Efficiency	100%	
Uniaxial Bend Rating	59.3	° / 100 ft
Min Make Up Torque	10,000	ft-lbs
Yield Torque	53,450	ft-lbs

v1.2

7/26/2018

This documentation contains confidential and proprietary information not to be reproduced or divulged in whole or in part to anyone outside of your company without prior written authorization from Precision Connections, LLC, and such documentation and information is provided to you upon such conditions of confidentiality.



**Torque Data Sheet - Precision Connections BK-HT**

**7.625 in. 33.7 lb/ft P-110 with 8.5 in. Coupling OD**

Min Make Up Torque	10,000	ft-lbs	Max Operating Torque	45,450	ft-lbs
Max Make Up Torque	40,100	ft-lbs	Yield Torque	53,450	ft-lbs
Optimum Torque	19,250	ft-lbs			

**Representative Torque Turn Graph**

