



P PRECISION
Keeping You Connected.

HT SEMI-PREMIUM

FIELD TESTED.
FIELD PROVEN.





CONTACT

Precision, LLC
11200 Mesa Dr.
Houston, Texas 77078

O: 713.678.8900
precision-llc.com

Technical Support
832.405.3711
mike.nations@precision-llc.com



HT SEMI-PREMIUM EXPERIENCE TRUE INNOVATION

BK-HT is a third generation, semi-premium connection, designed for HIGH PRESSURE / HIGH TORQUE frac strings.



FIRST GENERATION

Steam Injection and Steam Assisted Gravity Drain Wells. Needed torque for installation and sealing. Needed pin nose contact for compressive strength due to thermal stresses.

SECOND GENERATION

Drilling with casing Wells. Needed torque and fatigue life for installation. Vertical wells that were not extremely deep.

THIRD GENERATION



Horizontal Wells. Need torque for installation. Need hoop strength and better sealing for high frac pressures. Need fatigue life for rotating during installation through a curved bore.



HT SEMI-PREMIUM
FIELD TESTED. FIELD PROVEN.



 PRECISION

BUTTRESS COMPATIBLE

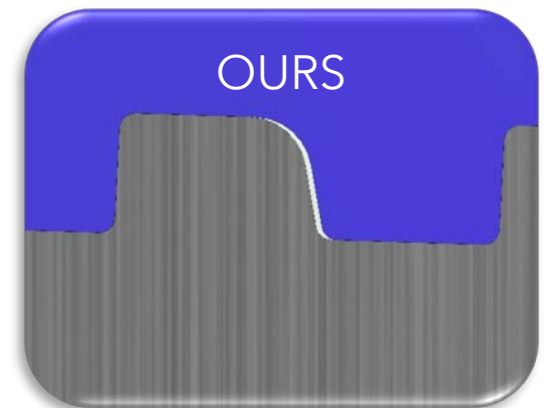
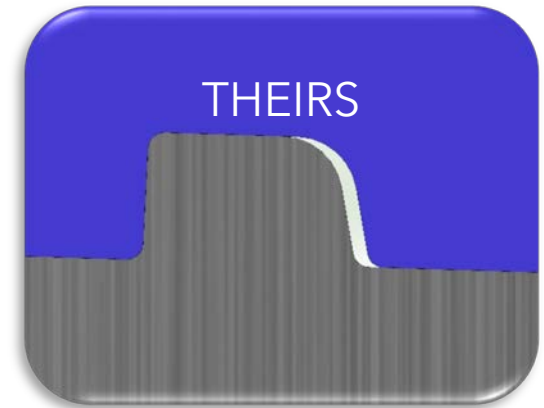
For cost savings on hangers, float shoes, float collars, crossovers and custom tools.

BETTER BUTTRESS SEALING

Modified buttress thread for tighter thread sealing and pin nose seal stabilization.

THEIRS API Thread Tolerance- Verified fit of several major insert manufacturers. Wide thread root.

OURS Minimizes thread gap for better thread sealing. **Custom Premium Insert.**





Features

Higher Torque and Improved Sealing

- The BK-HT uses a thicker coupling with a larger OD to increase strength and torque resistance.
- The thicker coupling can take higher frac pressures and supports thicker wall pipe with 100% matched pipe strength.
- Provides more strength when utilizing high collapse or enhanced burst strength pipe.
- Designed for High collapse P110 and L80
- Great for 125ksi min yield P110 grades
- Pipe with thicker walls like 5.5" 26# which are not covered by API.





Features

Higher Torque & Lower Drag

- A thicker coupling is stiffer and will stretch less axially and radially as the pin noses react to torque.
- The OD is beveled to reduce drag in horizontal wells.
- Optional Solid Body (SB) design for retaining centralizers available.
- Offered on 4.5", 5", 5.5", 6", 6.625" and 7" pipe.
- 7" and 6" always come with BK-HT.



— FIELD PROVEN. —

100%
FRAC STRENGTH

Tensile , compressive and pressure strength for high pressure frac jobs

20+

WELLS PER MONTH

Servicing over 20+ wells monthly



HT SEMI-PREMIUM

FIELD TESTED. FIELD PROVEN.

BK-HT accounts for 25% of all BK sales

8K+

MONTHLY INSTALLS

Over 8,000 couplings installed each month

12 MIL+

FEET INSTALLED

Over 12 million feet of couplings have been installed overall

BETTER BUTTRESS PIPE THREADS FOR SEALING

Modified buttress thread for tighter thread sealing and pin nose seal stabilization.

- More threads for sealing than API tolerances provide.
- Tighter tolerances on lead, taper and pitch diameter.
- Aggressive de-burr for trouble free make-ups.



*** Black Crested Threads provide a leak path.**

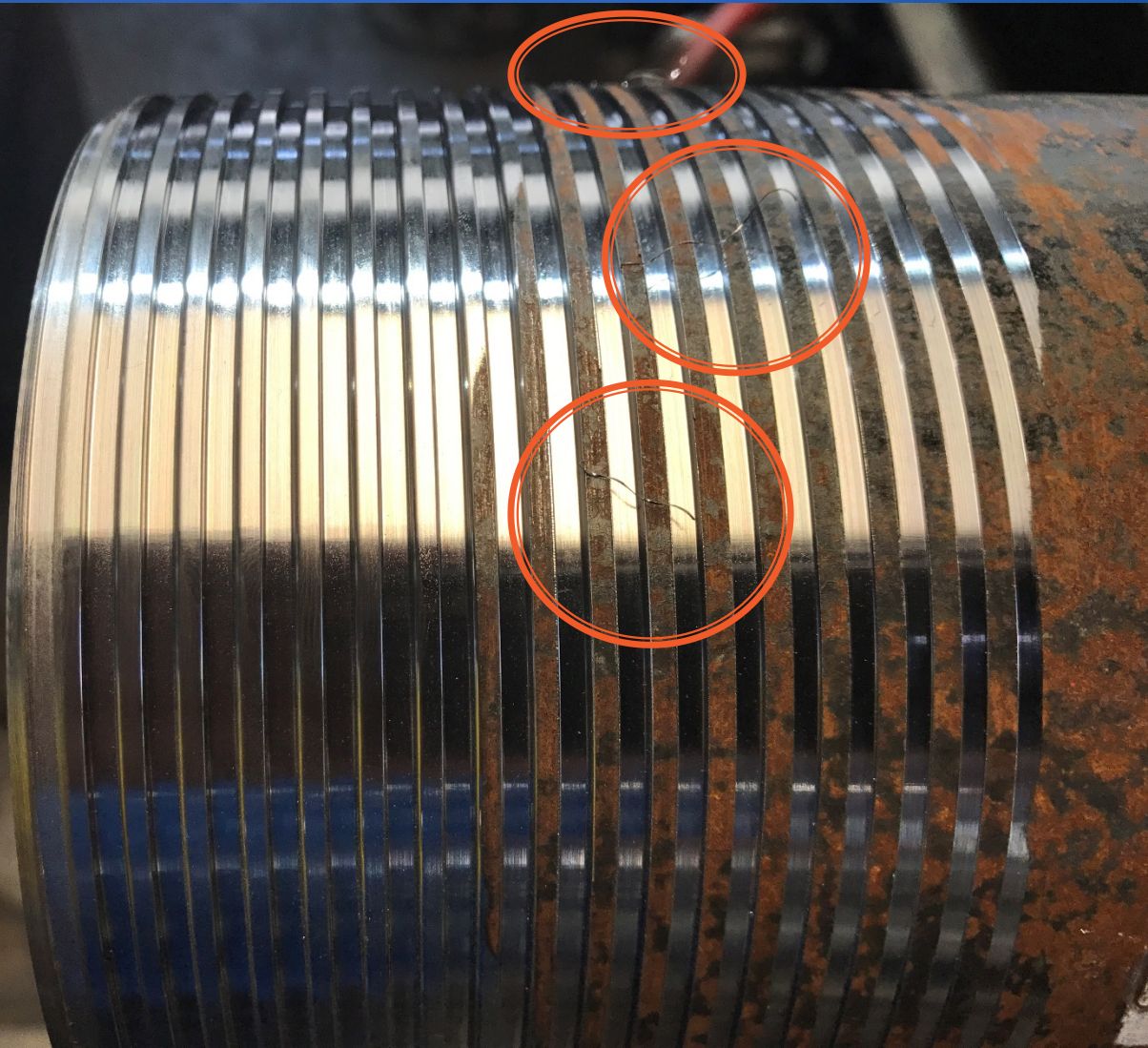


Burrs and Shavings.

Burrs commonly form in the runout / black crested pin thread region. They are a major cause of galling and rough coupling make ups. They also form on the pin nose. Most shops make no effort to remove these.

HT SEMI-PREMIUM

FIELD TESTED. FIELD PROVEN.





HT SEMI-PREMIUM
FIELD TESTED. FIELD PROVEN.

Deburring.

Deburring the runout/black crested threads and the pin nose is crucial to a trouble free make up. It ensures that the connection shoulders with a lower torque and can be made up multiple times without galling. This step is usually only performed on premium threads.



Saves End Users Time and Money

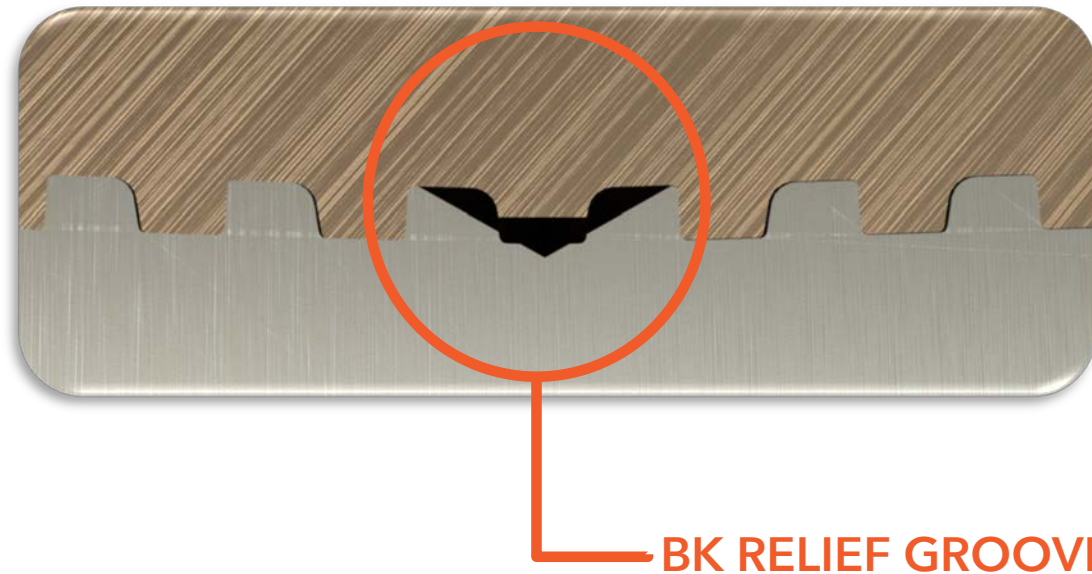
It requires time, tools and resources to deburr, which is why it is often skipped on semi premium. Without a deburr the cost is passed onto the end user who has to remake joints or lay down joints on a lousy make up. Deburred threads can be run faster (RPM) without galling.



HT SEMI-PREMIUM
FIELD TESTED. FIELD PROVEN.

ADVANCED RELIEF GROOVE

Ensures more threads are engaged for maximum sealing. The thicker midpoint cross sectional area Provides additional coupling strength.



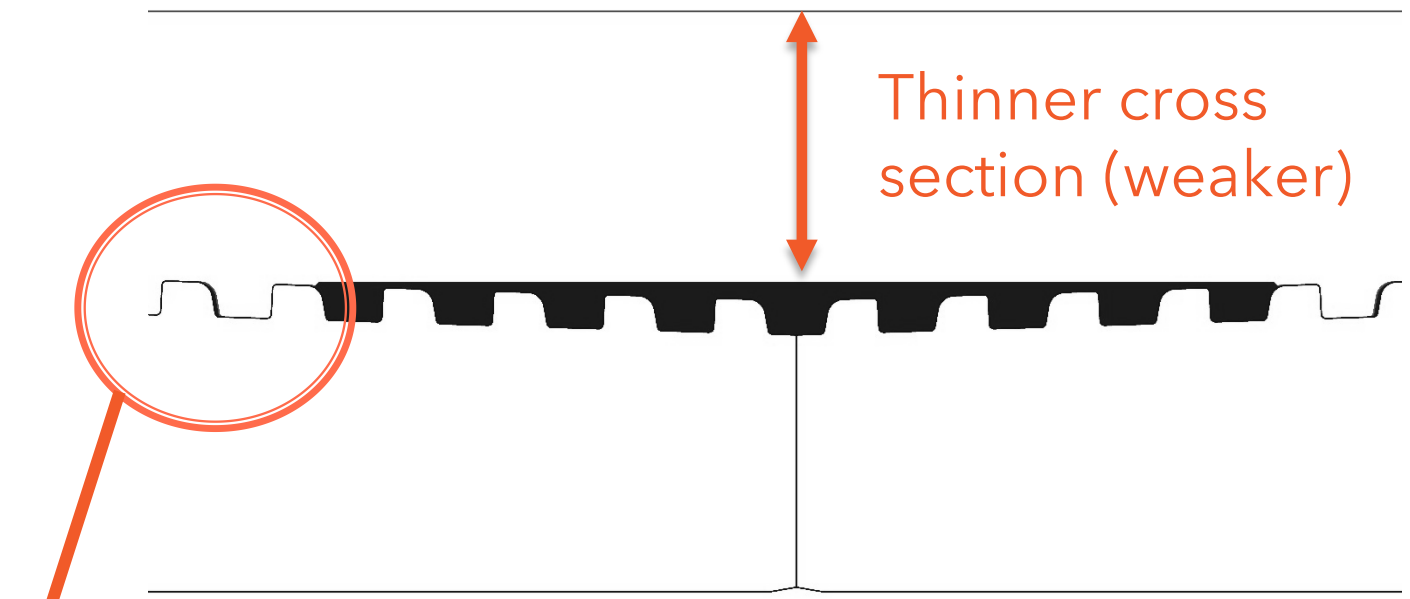
BK RELIEF GROOVE



PRECISION

Keeping You Connected.

First Generation Relief Groove



Fewer Engaged Threads
(Pressure weak)

Thinner cross
section (weaker)

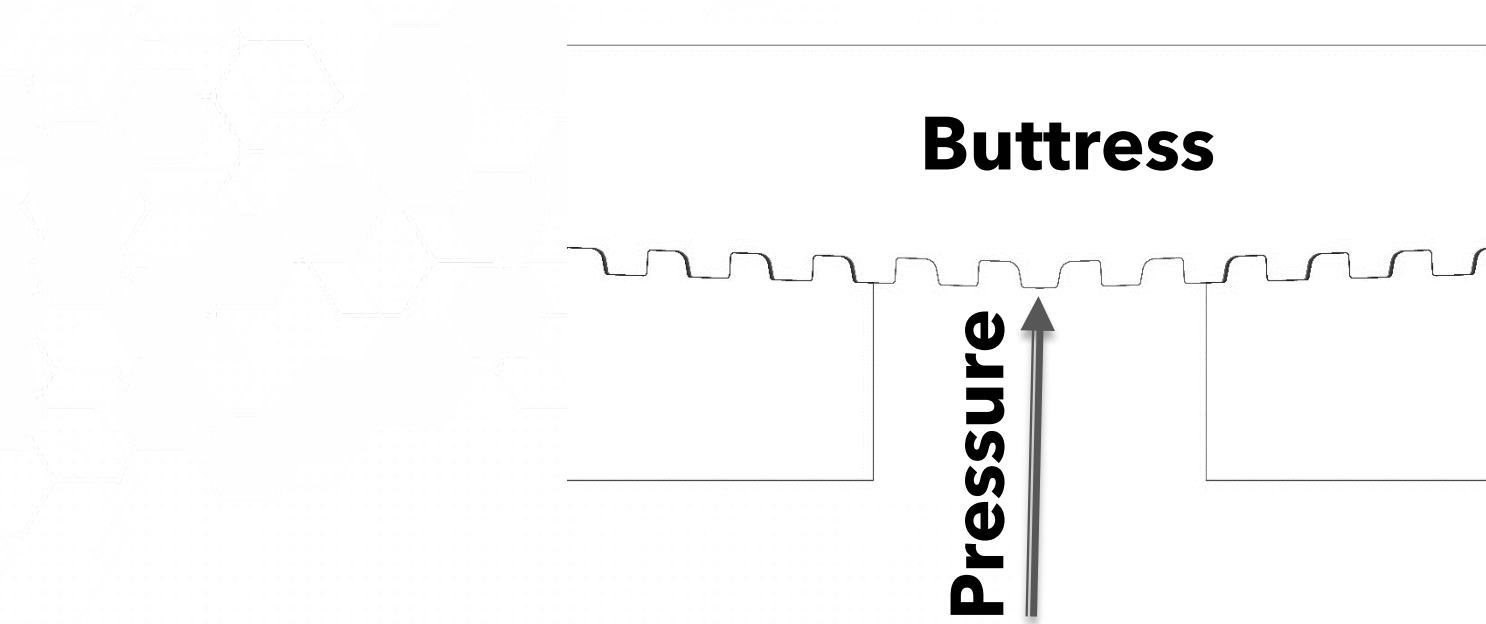
Dark Areas indicate unengaged thread regions



PRECISION

STRENGTH

Pin Nose to Coupling contact for high torque resistance, higher pressure ratings, higher bending loads and higher structural compressive loading . Smooth Premium Bore with no J-Area to get hung up on.



Standard Buttress allows the internal pressure to react against the thin walled coupling.



HT SEMI-PREMIUM



HT SEMI-PREMIUM
FIELD TESTED. FIELD PROVEN.

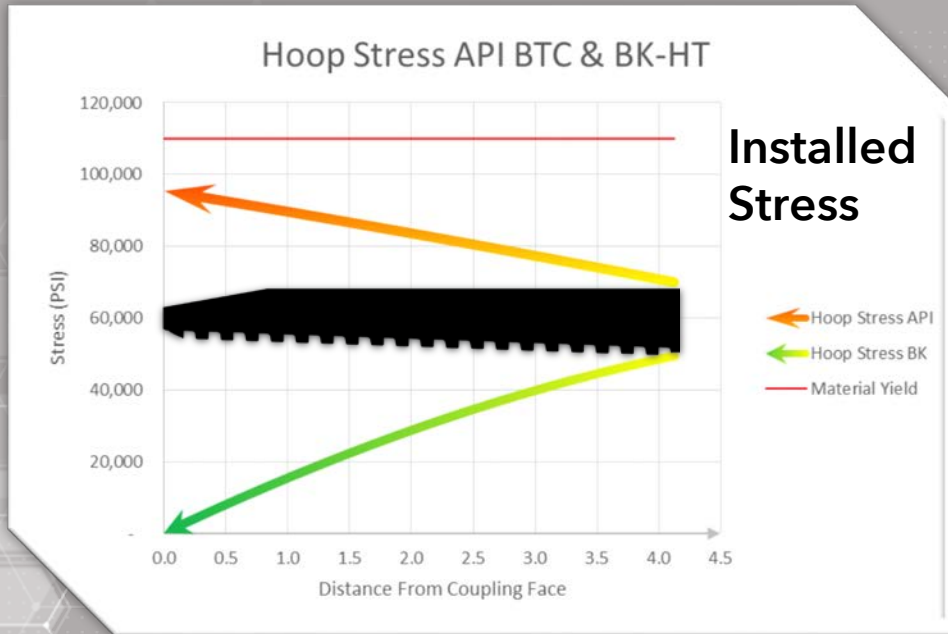
Types of Semi Premium Failures - Over Torque Split

The Coupling parts at the center from too much torque, load or combination of both.

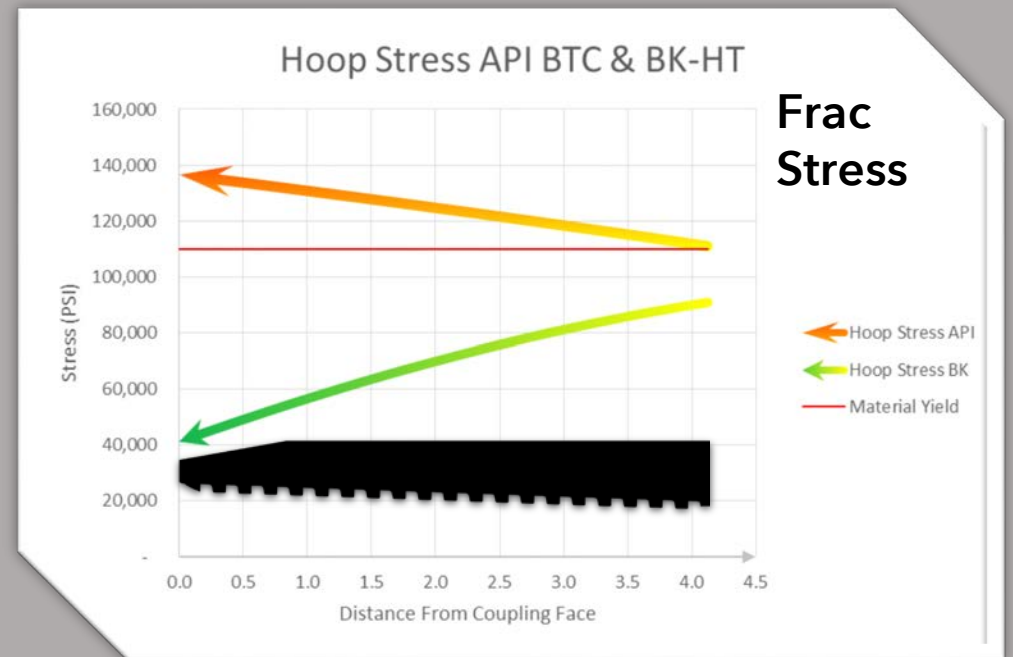
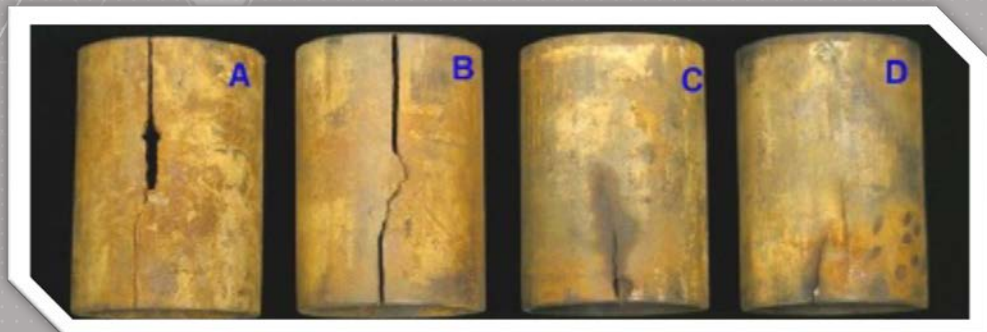


STRENGTH

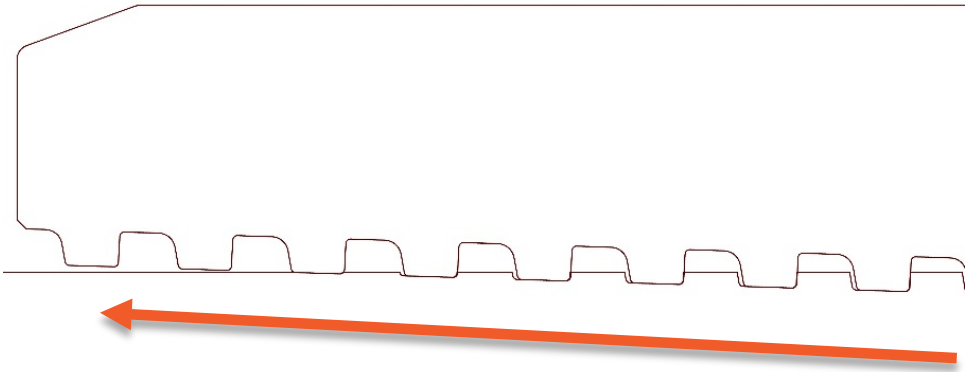
A low hoop stress design reduces the chance of coupling splits and leaks from high frac pressures. **Stress is kept below material yield strength.**



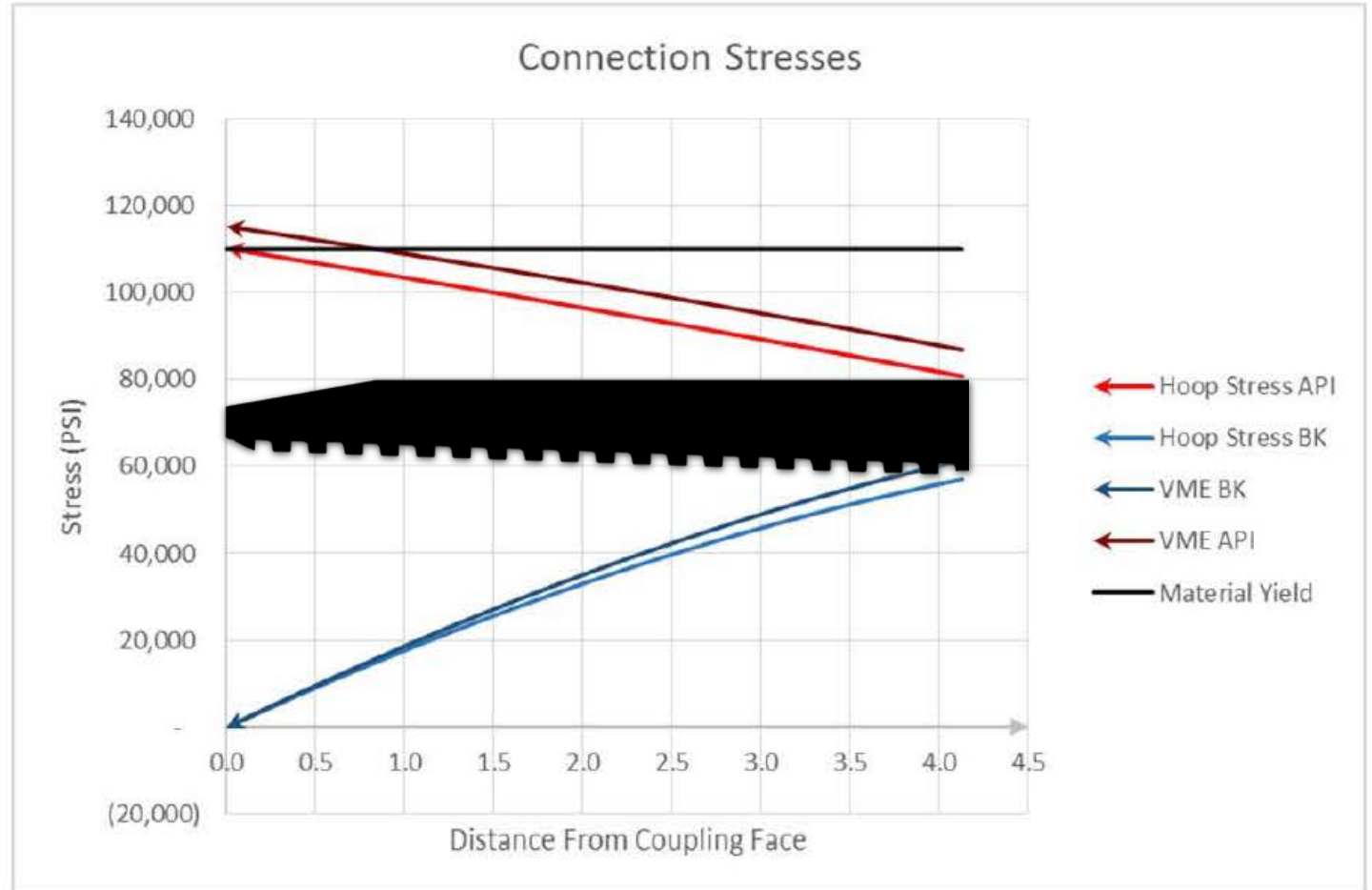
The coupling will return to its original shape after the frac without high residual stresses and deformations that accelerate corrosion and crack growth.



HIGH RPM FATIGUE RESISTANCE FROM LOW STRESS RUNOUT THREADS

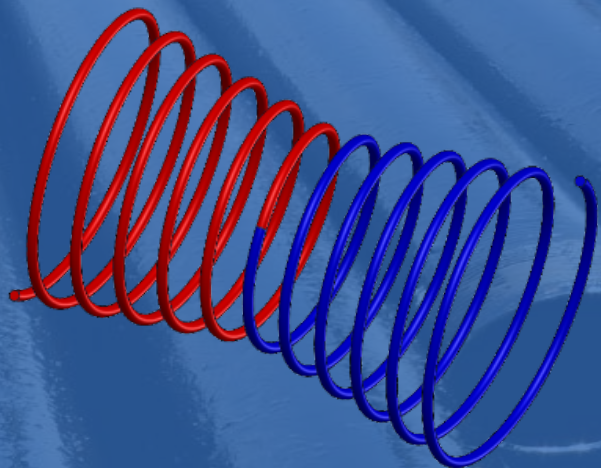


Extends the time it can be rotated through a dogleg at high RPM.

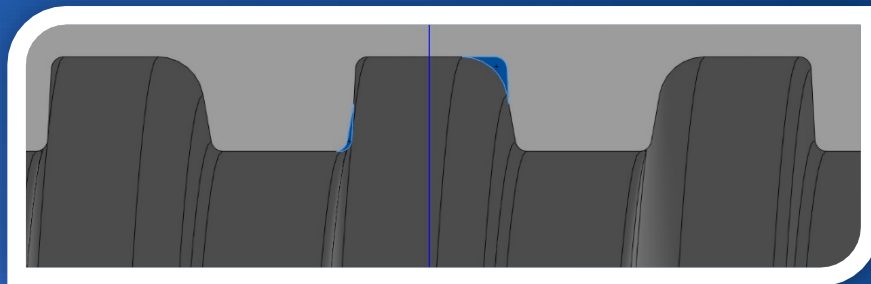




SEMI
PREMIUM CONNECTIONS

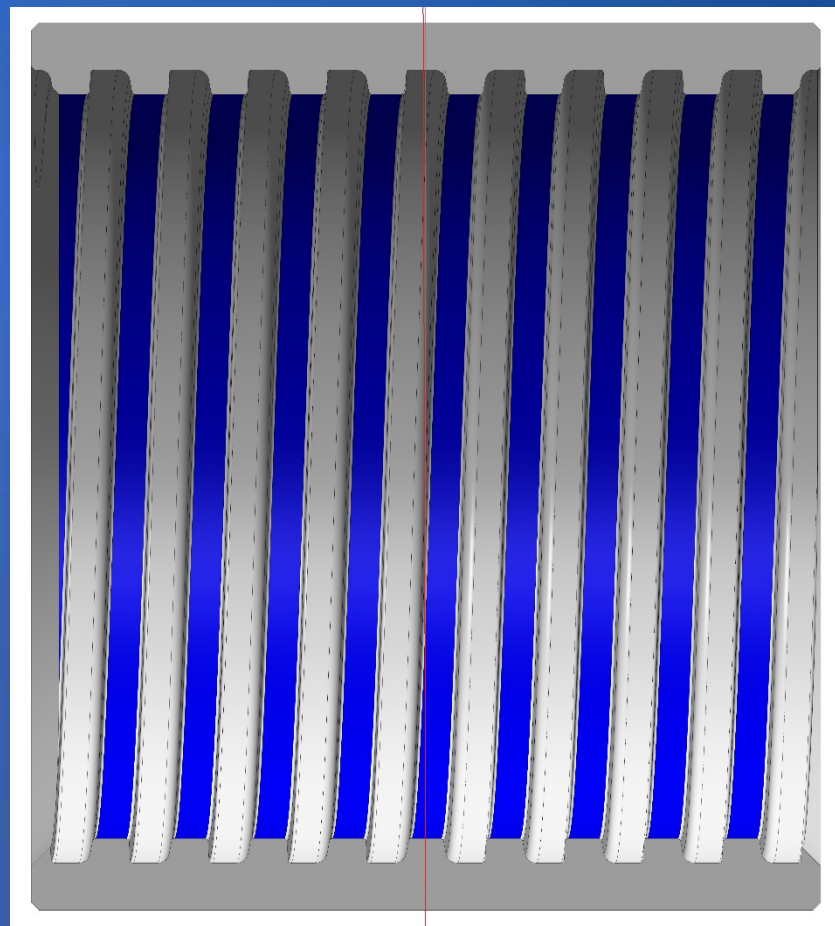


US Patent No.
9,261,207 &
9,261,208



THREAD INTERLOCK

The pin tooth will lock up past center as it is forced into groove that is its mirror image. The connection acts like a shouldered coupling.



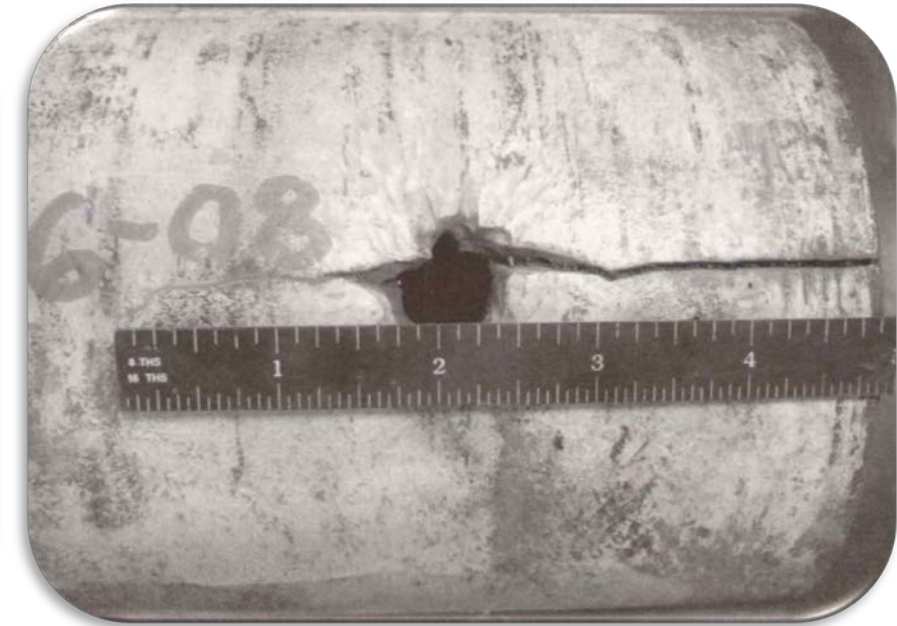
HELICALLY ALIGNED ROOTS

The coupling thread roots are cut so they perfectly overlap at the center of the coupling. This alignment ensures the pin thread crests are always in a groove if they rotate past the coupling center.



HT SEMI-PREMIUM
FIELD TESTED. FIELD PROVEN.

The thread interlock acts as an anti-rotation mechanism. It was designed to prevent the coupling from splitting or cracking. Many semi premium connections cross thread when rotated past the center.



The pin tooth crest can ride on top of the box tooth crest past the coupling center; the cross threading leads to a crack initiated washout.

PRECISION



PRECISION

HT SEMI-PREMIUM

FIELD TESTED. FIELD PROVEN.

TORQUE

The BK-HT has better high torque running characteristics which will keep the coupling intact past pin nose yield. The strength comes from more engaged threads with a thicker center.

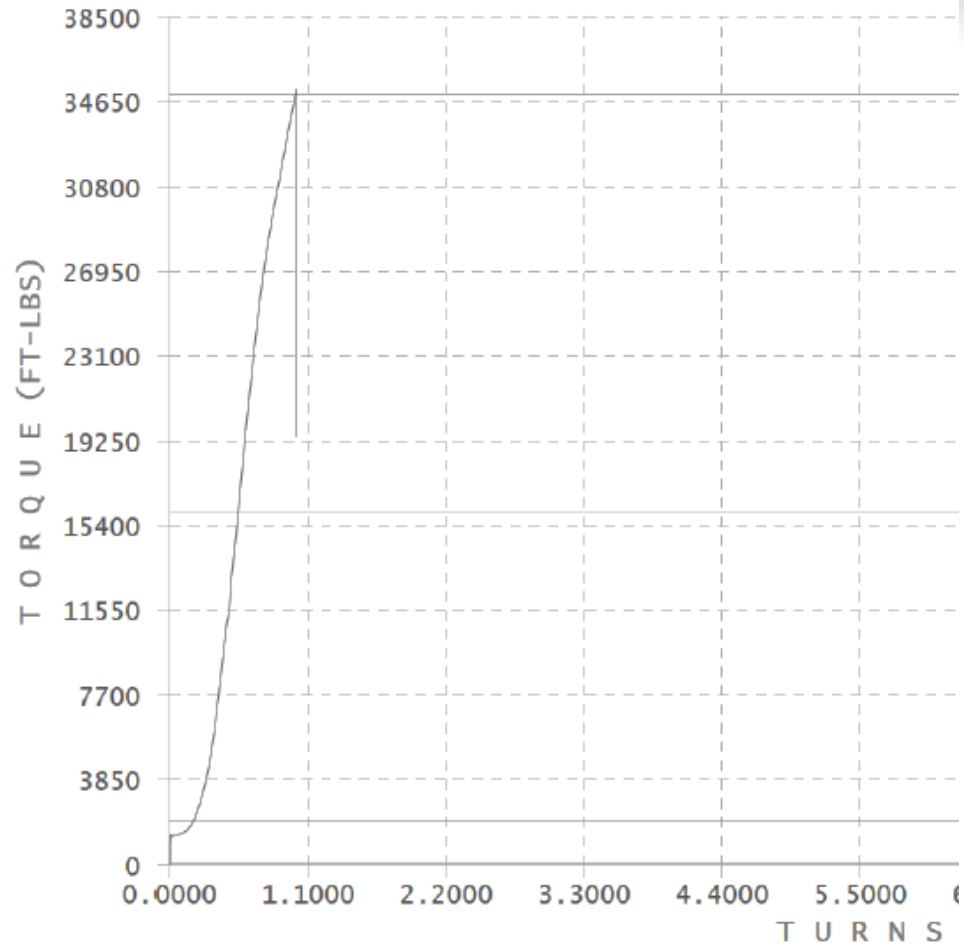




HT SEMI-PREMIUM

FIELD TESTED. FIELD PROVEN.

Over-Torque 5.5" 17# P110





HT SEMI-PREMIUM
FIELD TESTED. FIELD PROVEN.

FAST & CONSISTENT SHOULDER TORQUE INSTALLATION

Better threading techniques and coupling coatings allow for a quick low cost installation. The BK-HT will run quickly, reducing the run time per well.



HT SEMI-PREMIUM
FIELD TESTED. FIELD PROVEN.

RELIABLE MATERIALS

Unlike first generation drilling with casing connections, the BK-HT addresses the problems that have caused couplings to fail.



ELEMENTS OF MATERIAL FAILURES

HYDROGEN
SALTWATER
ACID
EXPOSURE TIME &
TEMP.
H₂S

ENVIROMENTAL

STRESS

+ 80% YIELD STRENGTH
BAD MAKE-UP & CROSS THREADING
FRAC PRESSURE
HIGH HOOP STRESS

MATERIAL
PROPERTIES

BRITTLENESS
STEEL CHEMISTRY



HT SEMI-PREMIUM

FIELD TESTED. FIELD PROVEN.

BK-HT

TOUGHER, THICKER AND
BUILT TO LAST.

The BK-HT uses a thicker coupling with a larger OD to increase strength and torque resistance. A thicker coupling is stiffer and will stretch less axially and radially as the pin noses react to torque.



SPECIFICATIONS

Size	Weight	Wall	Drift Dia.	Grade	Coupling Dia.	Pipe & Connection ID	Coupling Length	Make Up Loss	Torque (ft-lbf)		Yield Strength (x 1000lbs)		Yield Pressure (PSI)	
									Optimum	Yield	Tensile	Compression	Internal	Collapse
4.5	11.60	0.250	3.875	L-80	5.250	4.000	7.875	3.938	3,000	8,350	267	267	7,780	6,350
4.5	11.60	0.250	3.875	HC P-110	5.250	4.000	7.875	3.938	4,150	11,500	367	367	10,690	8,830
4.5	13.50	0.290	3.795	L-80	5.250	3.920	7.875	3.938	3,950	10,900	307	307	9,020	8,540
4.5	13.50	0.290	3.795	HC P-110	5.250	3.920	7.875	3.938	5,400	15,000	422	422	12,410	11,810
4.5	15.10	0.337	3.701	L-80	5.250	3.826	7.875	3.938	4,950	13,800	353	353	10,480	11,080
4.5	15.10	0.337	3.701	HC P-110	5.250	3.826	7.875	3.938	6,850	19,000	485	485	14,420	15,130
5	18.00	0.362	4.151	L-80	5.750	4.276	8.125	4.063	5,500	15,250	422	422	10,140	10,490
5	18.00	0.362	4.151	HC P-110	5.750	4.276	8.125	4.063	7,550	21,000	580	580	13,940	14,360
5	21.40	0.437	4.001	L-80	5.750	4.126	8.125	4.063	6,650	18,500	446	446	12,240	12,760
5	21.40	0.437	4.001	HC P-110	5.750	4.126	8.125	4.063	9,150	25,450	613	613	16,820	18,870
5.5	17.00	0.304	4.767	L-80	6.300	4.892	8.250	4.125	6,950	19,250	397	397	7,740	6,290
5.5	17.00	0.304	4.767	HC P-110	6.300	4.892	8.250	4.125	9,550	26,500	546	546	10,640	8,730
5.5	20.00	0.361	4.653	L-80	6.300	4.778	8.250	4.125	8,400	23,250	466	466	9,190	8,830
5.5	20.00	0.361	4.653	HC P-110	6.300	4.778	8.250	4.125	11,500	32,000	641	641	12,640	12,200
5.5	23.00	0.415	4.545	L-80	6.300	4.670	8.250	4.125	10,200	28,350	483	483	10,560	11,160
5.5	23.00	0.415	4.545	HC P-110	6.300	4.670	8.250	4.125	14,050	39,000	729	664	14,530	15,310
7	26.00	0.362	6.151	L-80	7.875	6.276	9.000	4.500	9,300	25,800	604	604	7,240	5,410
7	26.00	0.362	6.151	HC P-110	7.875	6.276	9.000	4.500	12,800	35,500	830	830	9,960	7,540
7	29.00	0.408	6.059	L-80	7.875	6.184	9.000	4.500	11,150	30,900	676	676	8,160	7,030
7	29.00	0.408	6.059	HC P-110	7.875	6.184	9.000	4.500	15,300	42,500	929	929	11,220	9,750
7	32.00	0.453	6.000	L-80	7.875	6.094	9.000	4.500	12,850	35,650	745	745	9,060	8,600
7	32.00	0.453	6.000	HC P-110	7.875	6.094	9.000	4.500	17,650	49,000	1025	1025	12,460	11,890

PRECISION

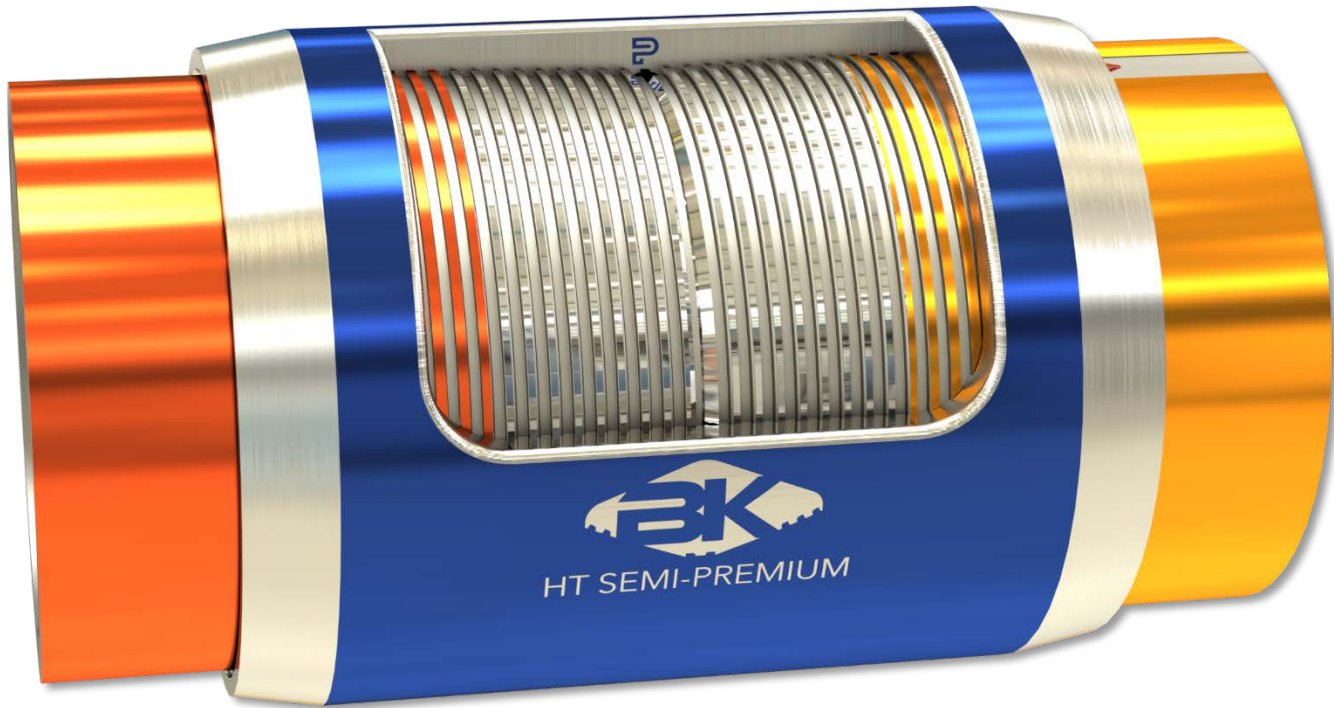
Keeping You Connected.



HT SEMI-PREMIUM

FIELD TESTED. FIELD PROVEN.





CONTACT

Precision, LLC
11200 Mesa Dr.
Houston, Texas 77078

O: 713.678.8900
precision-llc.com

Technical Support

832.405.3711
mike.nations@precision-llc.com